

From: [Norman, Kate](#)
To: [Theodore Stein](#)
Subject: Fwd: Post to web site
Date: Wednesday, January 21, 2015 2:04:28 PM
Attachments: [20150109_WAFWA_GRSG2015Overview_MGTmodified.pdf](#)

Could you please post this to the national sage-grouse site (similar place to the State workshop presentations from last fall)?

And if you could send the link back to me, Mike, and Nicole, that would be super!

Let me know if you need anything further :)

Thanks!

K

----- Forwarded message -----

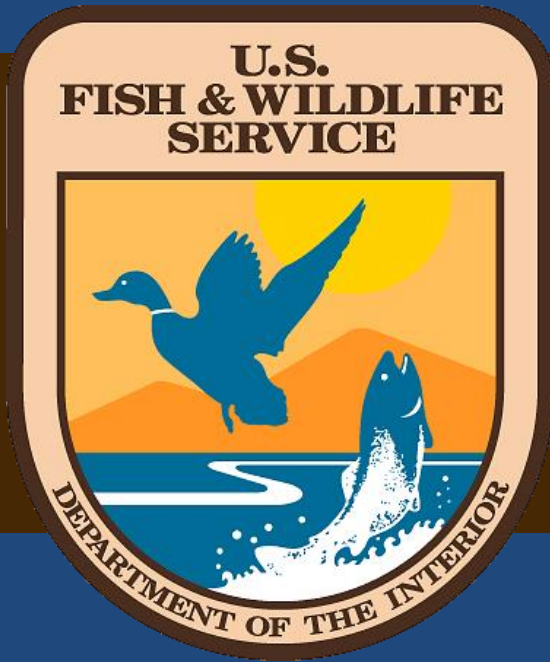
From: **Thabault, Michael** <michael_thabault@fws.gov>
Date: Wed, Jan 21, 2015 at 1:56 PM
Subject: Post to web site
To: Kate Norman <Kate_Norman@fws.gov>, Nicole Alt <Nicole_Alt@fws.gov>

Hey Kate, After SGTF today there was a commitment to post the PPt on the web. I took the liberty of deleting the extra slides and converting what I presented in to a PDF.

Michael Thabault
Assistant Regional Director
Ecological Services
U.S. Fish and Wildlife Service
Mountain Prairie Region
303-236-4210
michael_thabault@fws.gov

--

Kate Norman, Sage-Grouse Project Manager
U.S. Fish and Wildlife Service, Region 6
134 Union Blvd, Lakewood CO 80228
PO Box 25486, DFC, Mailstop 60120, Denver CO 80225
Office: 303-236-4214
Mobile: 703-927-2445
kate_norman@fws.gov



Greater Sage-Grouse 2015 Status Review

January 9, 2015

Goals for today:

- Understand the implications of omnibus rider
- Understand the process for completing the 2015 greater sage-grouse status review



Omnibus rider:

5

SAGE-GROUSE

6

SEC. 122. None of the funds made available by this
7 or any other Act may be used by the Secretary of the Inte-
8 rior to write or issue pursuant to section 4 of the Endan-
9 gered Species Act of 1973 (16 U.S.C. 1533)—

10

(1) a proposed rule for greater sage-grouse
11 (*Centrocercus urophasianus*);

12

(2) a proposed rule for the Columbia basin dis-
13 tinct population segment of greater sage-grouse;

14

(3) a final rule for the bi-state distinct popu-
15 lation segment of greater sage-grouse; or

16

(4) a final rule for Gunnison sage-grouse
17 (*Centrocercus minimus*).

What the rider means:

The Service cannot use funds to write or issue:

- Proposed rule for greater sage-grouse; Proposed rule for Columbia Basin; Final Rule for bi-state

The Service Will:

- Determine by Sept. 30, 2015, if the species still warrants protection under the ESA
- Continue to develop, implement, and analyze conservation efforts to support the species.



Status Review Process

- **Evaluate Current Status**
 - Trends, Abundance, Distribution
 - Threats
 - Conservation Efforts
- **Evaluate Future Status**
 - Projected Trends, Abundance, Distribution
 - Projected Threats
 - Projected Conservation Efforts
- **Legal and Policy Evaluation of Data**
- **Publication of Determination in the Federal Register**



Information Collection:

General Data Call and Candidate Notice

- We requested general data in 2014.

The Conservation Efforts Database

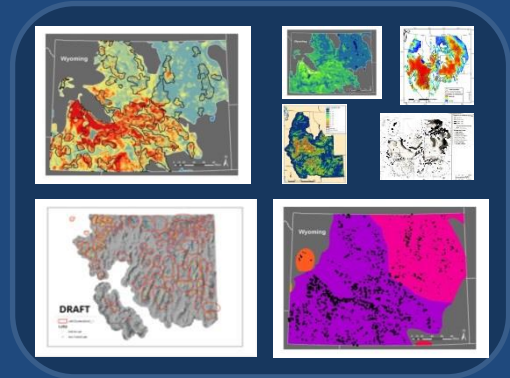
- We will consider all information received; we'd like your information as soon as possible.
- If you have questions, please contact either:
 - **Kathy Hollar**
Kathy_Hollar@fws.gov
 - **Lief Wiechman**
Lief_Wiechman@fws.gov



Modeling:

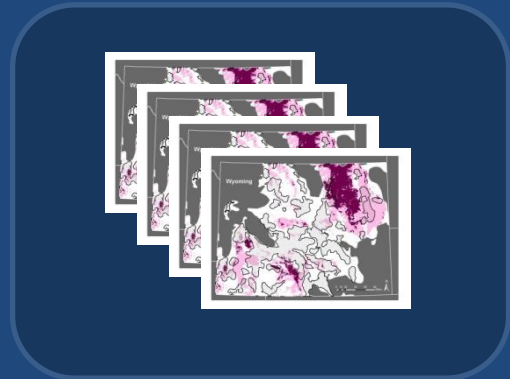
- 7 population models

- abundance
- distribution
- trends



- 4 risk models

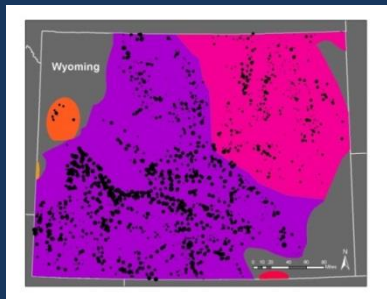
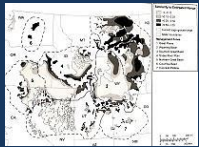
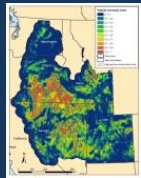
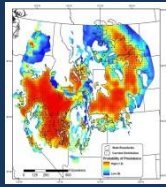
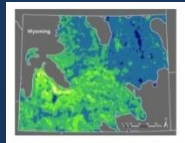
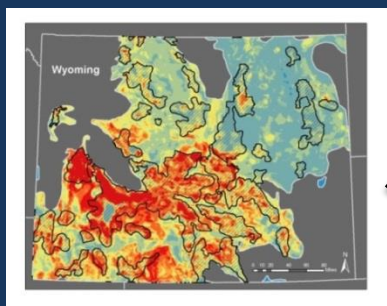
- oil & gas
- fire & invasives
- cropland risk
- conifer



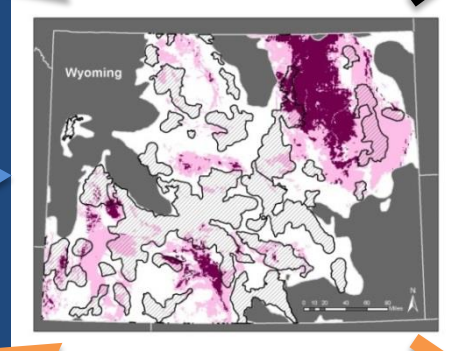
- Projects and analyses remain independent

**Please See Handout for full list of models*





Integrate through
spatial overlap
with 4 Risk Models



Projected Relative
Abundance

Projected Distribution

Projected Population
Trends

Current Population
Trend recent period

Species Report:

Summary of the Scientific Data

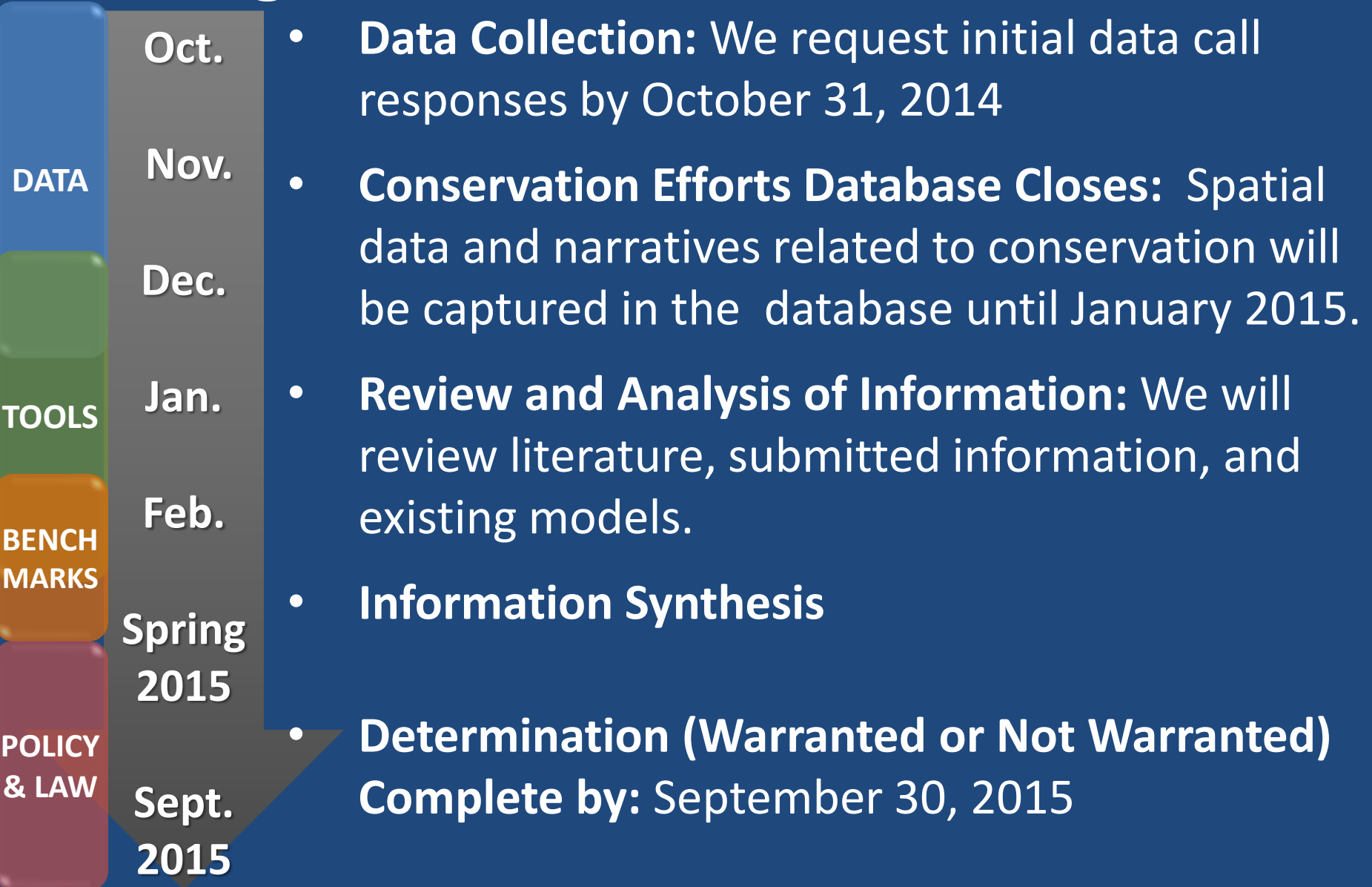
- Does not contain policy
- Does not determine species status

Timing

- Qualitative (currently underway)
- GIS Analysis (started, but will require CED data)
- Modeled Chapters (background started)



Timing



Summary:

- We will continue to work with our partners on conservation and evaluation of the species.
- The rider prohibits rulemaking, but we still want to understand the species status and benefits of conservation efforts.
- We must make a determination by September 30, 2015.
- Please provide information to us to contribute to our understanding.



Questions



For more information on the greater sage-grouse, please visit our national sage-grouse website.

<https://www.fws.gov/greatersagegrouse/>

